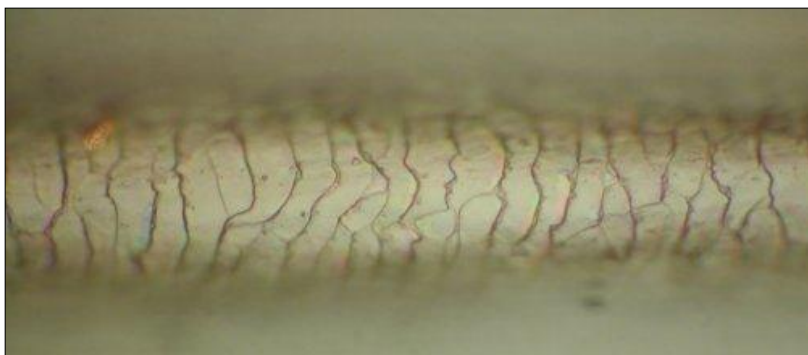

HAIR & COMPOUNDS, INC.

Scientific Performance

Tel: 818-997-8810
Fax: 818-997-8860
Email: hair@haircompounds.com
Website: www.haircompounds.com



APPLICATION GUIDES

- Hair Type Guide
- Hair Maintenance
- Ionix Application Guide
- Cylinder Extension Application Guide
- Cylinder Extension Retipping Guide
- Poly Extension Quick Info
- Poly Extension Application Guide
- Poly Capsules Application Guide
- Polytips Application Guide
- Poly Remover Application Guide
- Perfector, Perfector Plus, Retouch Plus Application Guide

Hair Type Guide (see next page for maintenance)

All hair orders are thoroughly inspected throughout the manufacturing of your order and primarily before its completion. Every weft extension, pre-tipped extension and bundle of hair is hand washed, vigorously tangle tested and air dried as part of our quality control procedures. Our primary concern is to make sure you and your customers are completely satisfied and therefore you must inspect your order(s) immediately after receiving them.

EXAMINE YOUR MERCHANDISE

Please examine the merchandise when you receive your order. Check the length, color, texture, quantity and quality according to the order requirements you submitted. Conduct your own tangle test before you install extensions on your client or send hair to another company for further manufacturing by shampooing and conditioning the hair.

The following are recommendations only for further treatment on the hair you purchase. We are not responsible for the outcome and we do not accept as a return any hair that is not in its original condition.

We try to keep a supply of hair sample swatches available in different hair manufacturing levels for chemical testing purposes. Although every bundle of hair can react differently, these swatches can be used for general testing. Ask us about sending you sample swatches with your order.

Russian Virgin Hair: This hair type can be bleached, colored and permed but contains the same risks as chemically treating normal scalp hair. Since this is cut hair its moisture levels are lower than scalp hair and may react differently to chemicals. Your risk is that the hair will tangle.

European Hair: This hair type may be a mix of various hair that was bleached, dyed and/or blended to obtain a custom color and texture match (all textures are 100% natural). It is advisable not to highlight, tint, dye, perm or apply any other type of chemical process since it is likely the hair has already been treated.

“Bleach” colors do not have any dye deposits. Only this type of hair can be easily highlighted, tinted and dyed. We strongly advise against further chemical treatments on light blonds. Your risk is damaging the integrity of the hair beyond repair.

Indian Hair: This hair type may be a mix of various hair that was bleached, dyed and/or blended to obtain a custom color and texture match (all textures are 100% natural). It is advisable not to highlight, tint, dye, perm or apply any other type of chemical process since it is likely the hair has already been treated.

“Bleach” colors do not have any dye deposits. Only this type of hair can be easily highlighted, tinted and dyed. We strongly advise against further chemical treatments on light blonds. Your risk is damaging the integrity of the hair beyond repair.

Cuticle Free (non-cuticle) Hair: **We strongly advise against any and all chemical treatments.** This hair type has the most chemical processes applied upon it and will react negatively with additional treatments. **Your risk is damaging the integrity of the hair beyond repair.**

With any of the above hair types please conduct a strand test. Every group, batch or order of hair may be from a single donor or a combination of donors. The donor's environment, diet, weathering and maintenance affect the performance of the hair long after it was cut and manufactured.

Hair Maintenance

Ionix

The only line scientifically designed for the maintenance of hair extensions, hairpieces and wigs.

	Virgin Hair	Cuticle, Levels 1-6	Cuticle, Levels 7-9	Cuticle, Levels 10-12	Non-Cuticle	Cuticle Free Roots
Pre-Shampoo Solution			•	•	•	Same as Cuticle
Mild Shampoo	•	•	•	•	•	
Daily Conditioner	•	•	•	•	•	
Deep Conditioner				•	Light Blonds	
Maintenance Spray		•	•	•	•	

Blonds

Hair colors in levels 10 and lighter require the most maintenance. In many cases the hair has been bleached from a light brown or dark blond, levels 6-8, and are susceptible to dryness and split ends. If properly maintained and moisturized the hair will look and feel soft and healthy.

Use the Pre-Shampoo, Mild Shampoo, Daily Conditioner and Maintenance Spray every time the hair is washed.

Use the Deep Conditioner every 5th wash instead of the Daily Conditioner.

Avoid using straightening irons, curling irons, blow drying straight and styling products with alcohol.

Avoid any additional chemical processes.

DO NOT APPLY PERMANENT WAVE CHEMICALS!

DO NOT USE HIGHER THAN 10 VOLUME PEROXIDE!

IF YOU MUST APPLY COLOR USE LOW AMMONIA CREAM BASED PRODUCTS.

USE GENTLE CHELATORS TO REMOVE BUILD UP TO AVOID FLY AWAY.

Ionix Application Instructions

Ionix products are for “cut” hair: hair extensions, wigs and hairpieces that have non-cuticle hair, highly bleached or any type of chemically processed hair.

Pre-Shampoo Solution:

A blend of natural oils that replaces the hair’s natural oil lost during chemical processing. It will prevent additional damage to the hair by protecting the fibers prior to cleaning and by adding natural moisturizers.

Spray lightly all over dry hair. Work through with fingers or comb. Lightly rinse hair and proceed with Ionix Mild Shampoo. Do not use with other shampoos that will leave deposits causing damage.

Mild Shampoo:

A light hair cleanser that must be applied after the Pre-Shampoo Solution in order to clean the hair effectively and reduce damage normally caused by regular shampoos. After rinsing hair from Pre-Shampoo Solution, apply the Mild Shampoo and massage into a lather. Rinse thoroughly. Follow with the Ionix Daily Conditioner or the Deep Conditioner.

Daily Conditioner:

An intricate system made to drastically reduce friction that causes normal, dry and damaged hair to fracture and break.

Apply to clean, damp hair. Rinse thoroughly. For more intense conditioning, wait 1-3 minutes. Follow with Ionix Maintenance Spray for all day protection. Style as usual.

Deep Conditioner:

A sophisticated lubricating system that strengthens the hair by increasing elasticity and moisture content. Apply to clean, damp hair and work through to ends of hair. Rinse thoroughly. Follow with Ionix Maintenance Spray for all day protection. Style as usual.

Maintenance Spray:

A powerful neutralizing leave-in conditioner that neutralizes oxidation and conditions the hair through out the day. Use on either wet or dry hair daily. Spray thoroughly and comb through hair. Allow to dry naturally.

APPLICATION GUIDE

PRODUCT DESCRIPTION

Cylinder Extensions are pre-tipped Indian Remy cuticle or Russian virgin hair strands.

Densities:

Small: 50 hair strands per bundle

Large: 25 hair strands per bundle

Textures: Standard (slight wave to body wave), Curly (natural tight wave to loose curl) - 100% natural—no perms.

Lengths: 16", 18", 20" and 22" lengths.

Professional Color Ring: Choice of 33 colors in multiple levels and hues.

TIPS

The Cylinder extensions have a finely engineered tip that will not crack or shed and can be re-attached numerous times.

The tip will remain strong and flexible and can be easily reshaped into a cylinder prior to each application.

1. Direct hot air from a hair dryer onto the cylinder tips until they revert to their original shape.
2. Use high heat setting.
3. Hold a distance from 2" to 5" from the hair dryer to the tips.
4. Use large pliers to hold the bundle or handful of extension strands so the hot air will be further from your hand.
5. It takes approximately 70 seconds to reshape 25 large or 50 small tips.
6. DO NOT apply heating irons directly to the tip or it will distort.
7. DO NOT apply glues to the tips or they will not reshape.

Cylinder Re-Tipping

Cylinder Shells

50 pcs/bag, \$18

The Cylinder extensions can be re-used multiple times by simply re-shaping the tips.

Direct hot air from a hair dryer onto the cylinder tips until they revert to their original shape.

Use high heat setting.

Hold a distance from 2" to 5" from the hair dryer to the tips.

Use large pliers to hold the bundle or handful of extension strands so the hot air will be further from your hand.

It takes approximately 70 seconds to reshape 25 large or 50 small tips.

DO NOT apply heating irons directly to the tip or it will distort.

DO NOT apply glues to the tips or they will not reshape.

Use the Cylinder shells to replace any tips that have split and will no longer re-shape.

Tools required: Loof extension iron, Polytips, Cylinder shells, scissors and hair dryer.

1. Place 1 Polytip into the bottom groove of the heated Loof iron.
2. Cut off the old tip completely from the hair extension.
3. Apply melted glue to the top of the hair strands.
4. Use the flat section of the iron to squeeze out excess glue.
5. Roll the glued hair between fingers very firmly and quickly forming a rounded shape. Roll tight and fast or you will create a shape that is too big or uneven to fit the shells.
6. Use scissors to trim the top edge so the glued area is no longer than 0.5 cm in length.
7. Insert the bonded roots into the Cylinder shell. Position the shell so that the bottom edge is slightly below the glued area.
8. Place the tip inside one of the small grooves of the Loof iron and close prongs for no more than 2 seconds. Open and remove from the heat immediately. The shell should have shrunk and sealed around the glue.
9. Allow the tip to cool and harden for several minutes and then trim the tip to the desired length.
For final shaping and sealing use a hair dryer as you would for re-shaping.

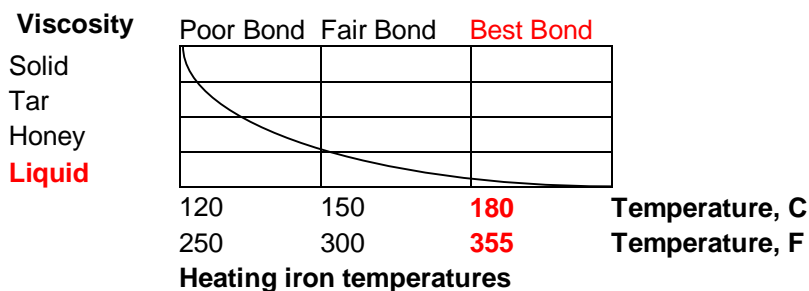
Please note we restrict Cylinder shell sales to be used for repair only.

Orders are accepted based on previous purchase of Cylinder extensions.

QUICK INFO

Poly Adhesive

Viscosity of Poly bond when melting at different temperatures



If you use a heating iron set to at least 180 deg C and wait for poly tip to melt until liquid you will have a strong long lasting bond.

PLEASE READ BEFORE YOU APPLY THE POLY EXTENSIONS

How to achieve absolute success with our polymer bond for the Poly Extensions:

Most stylists have been trained and practiced to soften the bond and then reshape. We have observed many customers that gently soften and melt the bond, then pinch a little, soften a bit more, and so on until you achieve the shape you want. The Poly bond is not a clay to mold—it must be completely melted.

If you apply our polymer bond using a softening and folding technique they will start slipping out within a few weeks. This technique just softens the bond so it wraps around the customer's hair and then after several washings, brushing and other stress the bonds will begin slipping out.

- You must melt the polymer bond completely!!
- It must be melted to liquid so it will disappear into the hair strands.
- It will not run or drip. If you have stringing then it is not melted enough.
- Use heating irons with 2 sided prongs that heat on both sides.
- You do not need to worry about scorched fingers. The open time of the bond is very fast. This means it cools from hot molten liquid to a hard rubbery bond within 1-2 seconds - which is about as fast as it takes you to put down your iron and begin shaping the finished bond.
- When molding bond pinch and roll downward. Give an extra hard pinch at top and bottom.

BAD: If your bond looks full and rounded and you can see the amber color of the pre-melted form.

GOOD: If your bond looks matte, mostly seeped into the hair and appears half the size of the pre-melted form.

POLY EXTENSIONS

APPLICATION GUIDE

HAIR & COMPOUNDS, INC.
818-997-8810
hair@haircompounds.com

TIPS

1. Avoid a bond longer than 1/2 inch. If you spread the glue too thin it will peel at the edges.
2. Do not trim off so much glue before bonding that you don't have enough to seep into all the hair. You can trim the top of the tip off for a shorter bond but do not trim the sides.
3. Do not reheat and move the bond numerous times as this reduces its strength.
4. When melting the bond do not leave behind un-melted globules.
5. It is easier if you place the tip under the hair strands and then pinch between iron prongs when melting.
6. Avoid getting scorched glue bits onto your bonds. Keep your heating iron prongs clean. Have a napkin or towel nearby to wipe off excess glue periodically.
7. Avoid pulling, bending and conditioning the hair extensions within the first 24 hours. The bond continues to harden and reaches its maximum strength after 24 hours.
8. Avoid long term contact with styling products that contain oils and alcohols. The polymer is both oil and chemical resistant but err on the side of caution.
9. When melting do not tap and pinch repeatedly to form mold. Hold iron to glue and wait until it has melted and seeped into the hair.
10. You do not need to avoid high heat hair dryers. The new polymer can withstand direct hot air on the bonds without softening.

REMOVAL:

Please use our non-hazardous Poly Remover that contains natural ingredients. It works faster and more effectively than the harsh and toxic Acetones or Alcohols.

Storage: Keep the hair extensions sealed in a zip lock bag and stored in a cool dry place when not in use. The hot melt adhesive will absorb moisture from the air and it will reduce bond strength if not properly stored.

Instructions

1. Clean hair thoroughly and dry completely.
2. Place poly tip under strands to be bonded.
3. Pinch and hold closed over the poly tip and hair a 2-sided heating iron set at 170-180 deg C.
4. Count: 1 thousand one, 1 thousand two and lift iron to check for any unmelted areas. If you have stringing you did not melt enough time.
5. Remove iron and wait for another second.
6. Pinch and roll from top to bottom forming bond. Pinch hard at top and bottom.

TECH DATA

The Poly Extensions will hold for 3 months minimum when applied as directed. Please review carefully.

Application temperature: For best bond time and an excellent seal melt the glue at 170-180 deg C (340-360 deg F).

Open Time: Our polymer bond has a fast open time so the bond will not burn or stick to your fingers, yet it remains rubbery long enough for you to shape your bond.

Prepare Surfaces: All surfaces must be clean, dry and free of oils and residues. For oily scalps use Iso-propyl Alcohol during prep. When hair is nearly dry spray onto root areas and then finish drying the hair.

To achieve optimum bond strength:

- When heating wait until glue is liquid before forming bond. Inadequate heat will result in stringing and peeling. The molten glue must thoroughly wet out the hair fibers. This takes 2-3 seconds with a high heat iron.
- Hot melt glues are categorized as PSA (Pressure Sensitive Adhesives). The more pressure applied during application the stronger the bond. Give the top and bottom of the bond an extra hard pinch directly after shaping bond.
- A properly formed bond will achieve 50% of its strength after 1 minute, 75% after 1 hour and 100% after 1 day.

POLY CAPSULES

APPLICATION GUIDE

HAIR & COMPOUNDS, INC.
818-997-8810
hair@haircompounds.com

RECOMMENDED APPLICATION

Step 1: Pour quantity required for immediate use into hot pot and set temperature to 350-400 degrees F. Wait until capsules have liquefied and hair strands can easily penetrate into the molten glue without bending or twisting.

Step 2: Prepare hair roots of extension hair for application. Shampoo and rinse the roots completely. **DO NOT APPLY CONDITIONER!** Towel dry, dip the roots up to 1" into Isopropyl Alcohol (rubbing alcohol) and squeeze out excess. Brush roots flat and either air dry or use flat iron to dry quickly and smoothly. The hair **MUST** be completely dry and the alcohol evaporated before applying glue. The application will be much easier if the roots are flat and smooth.

Step 3: With clean and dry hands separate the desired quantity of hair strands. Make sure roots are even at the top -trim if necessary. Hold strands about 2" from root tops in order to keep the strands from splaying outwards.

Step 4: Dip roots of hair strands straight down into molten glue to a depth of 1/4". Pull out glue covered tips and use side of hot pot to remove any excess glue. Roll or pinch the tip into desired shape. Once dry trim any excess glue from tip. The bonded hair strands are ready for attachment.
Please make sure your hands are clean and dry or you will be rolling oils into the bonded glue tip.

Step 5: Prepare scalp hair—refer to step 2.

Step 6: Preheat the purging tool or heating iron to 280-325 degrees F. Position extension and scalp hair between the purging iron's heating surface and hold closed until you see the glue liquefy and you no longer have un-melted globules. Pinch and roll the cooling glue and hair strands together into desired shape.

Pinch firmly at top and bottom of bond to seal—remember this is a pressure sensitive adhesive!

PRODUCT DESCRIPTION

POLY CAPSULES— 30 grams

Small amber pellets sealed in a zip-lock moisture free bag. 30 grams will yield approximately 800 bonded hair tips. Dries clear/translucent.

Poly Capsules is a polyamide hot melt designed for adhering human hair fibers together for hair extensions.

Our Poly adhesives demonstrate excellent bond strength and high heat resistance. Its thick viscosity and short open time make it very user friendly for both application and removal.

TECH DATA

The Poly Capsules will hold for 3 months minimum if you follow the application instructions. Please review carefully.

Application temperature for Poly Capsules:
Set hot pot or heating tank to 350-400 degrees F.

Open Time: Our new polymer bond has a fast open time so the bond will not burn or stick to your fingers, yet it remains rubbery long enough for you to shape your bond.

Prepare Surfaces: All surfaces must be clean, dry and free of oils and residues. For oily scalps use Isopropyl Alcohol during prep. When hair is nearly dry spray onto root areas and then finish drying the hair.

To achieve optimum bond strength:

- When heating wait until glue is liquid before forming bond. Inadequate heat will result in stringing and peeling. The molten glue must thoroughly wet out the hair fibers. This takes 2-3 seconds with a high heat iron.
- Hot melt glues are categorized as PSA (Pressure Sensitive Adhesives). The more pressure applied during application the stronger the bond. Give the top and bottom of the bond an extra hard pinch directly after shaping bond.
- A properly formed bond will achieve 50% of its strength after 1 minute, 75% after 1 hour and 100% after 1 day.

Storage: Keep the zip-lock moisture free bags sealed when not in use. The Poly Capsules will absorb moisture from the air and it will reduce bond strength if not properly stored.

POLYTIPS

APPLICATION GUIDE

HAIR & COMPOUNDS, INC.
818-997-8810
hair@haircompounds.com

RECOMMENDED APPLICATION

Step 1: Prepare hair roots of extension hair for application. Shampoo and rinse the roots completely. **DO NOT APPLY CONDITIONER!** Towel dry, dip the roots up to 1" into Isopropyl Alcohol (rubbing alcohol) and squeeze out excess. Brush roots flat and either air dry or use flat iron to dry quickly and smoothly. The hair **MUST** be completely dry and the alcohol evaporated before applying glue. The application will be much easier if the roots are flat and smooth.

Step 2: With clean and dry hands separate the desired quantity of hair strands. Make sure roots are even at the top -trim if necessary. Hold strands about 2" from root tops in order to keep the strands from splaying outwards.

Step 3: Preheat the purging tool or heating iron to 350 degrees F. Drop 1 Polytip into the middle of the heating tip surface. Wait until the tip has liquefied. Position hair roots onto the molten glue and close heating tool tips to seal. Release after 1-2 seconds and remove from tool. Shape the tip into your desired shape. Once dry trim any excess glue from tip. The bond is ready for application.

Please make sure your hands are clean and dry or you will be rolling oils into the bonded glue tip.

Step 4: Prepare scalp hair—refer to step 2.

Step 5: Preheat the purging tool or heating iron to 280-325 degrees F. Position extension and scalp hair between the purging iron's heating surface and hold closed until you see the glue liquefy and you no longer have un-melted globules. Pinch and roll the cooling glue and hair strands together into desired shape.

Pinch firmly at top and bottom of bond to seal—remember this is a pressure sensitive adhesive!

PRODUCT DESCRIPTION

POLYTIPS, 5 Grams—225 tips
POLYTIPS, 10 Grams—450 tips

These pre-molded tips do not require a hot pot or a heating tank to apply. Each tip is formed into a very thin rectangular shape with the precise amount of hot melt required to make a single hair extension bond. Polytips are a polyamide hot melt designed for adhering human hair fibers together for hair extensions. Our Poly adhesives demonstrate excellent bond strength and high heat resistance. Its thick viscosity and short open time make it very user friendly for both application and removal.

TECH DATA

The Polytips will hold for 3 months minimum if you follow the application instructions. Please review carefully.

Application temperature for Polytips: Set purging tool or heating iron to 350 degrees F (175 degrees C) minimum.

Open Time: Our new polymer bond has a fast open time so the bond will not burn or stick to your fingers, yet it remains rubbery long enough for you to shape your bond.

Prepare Surfaces: All surfaces must be clean, dry and free of oils and residues. For oily scalps use Isopropyl Alcohol during prep. When hair is nearly dry spray onto root areas and then finish drying the hair.

To achieve optimum bond strength:

- When heating wait until glue is liquid before forming bond. Inadequate heat will result in stringing and peeling. The molten glue must thoroughly wet out the hair fibers. This takes 2-3 seconds with a high heat iron.
- Hot melt glues are categorized as PSA (Pressure Sensitive Adhesives). The more pressure applied during application the stronger the bond. Give the top and bottom of the bond an extra hard pinch directly after shaping bond.
- A properly formed bond will achieve 50% of its strength after 1 minute, 75% after 1 hour and 100% after 1 day.

Storage: Keep the zip-lock moisture free bags sealed when not in use. The Polytips will absorb moisture from the air and it will reduce bond strength if not properly stored.

POLY REMOVER

Safe extension bond remover

By Hair & Compounds, Inc.
818-997-8810
hair@haircompounds.com

- 100% all natural ingredients
- Vegetable oil based formula
- Non-Toxic
- No caustic fumes
- Biodegradable
- Non flammable

The Poly Remover now has a pleasant citrus odor in a slightly thicker and oily liquid. This is not to be mistaken for the d'Limonene citrus solvents that do not work very effectively when removing adhesives.

The Poly Remover works quickly to break down the extension bonds without drying out the hair. The slightly oily liquid helps glue particles glide out of the hair and it greatly assists working with tangled or matted hair.

Directions:

1. Please use the liquid when it is at room temperature. At colder temperatures the Poly Remover will thicken and begin to separate.
2. Shake contents for at least 1 minute before initial application and occasionally during application.
3. Apply a liberal amount to each bond on a single row.
4. Use pliers (with serrated jaws) to crack and break the bonds, otherwise the remover will only attack the outer surface. By breaking the bonds you enable the remover to seep inside and underneath to begin the removal.
5. Reapply to any dry areas in and around the bond.
6. Continue with each bond in the row.
7. Return to the first bond and begin to comb and pull apart the bond from the client's hair. As you reveal any dry areas massage the remover into the surface.
8. Once the hair extension has been removed continue with the next bond. There may be small glue particles left in the client's hair – allow the remover to continue working and loosening these particles while you work on the other bonds.
9. After the first row of bonds have been removed use a fine tooth comb and comb out the remaining glue particle down and out of the hair. If you have any dry areas or tangles in the hair apply more of the remover and this will create a slicker and easier surface to comb.
10. Repeat the above steps for the rest of the bond rows. Clean thoroughly with Mild Shampoo and rinse well.

The Poly Remover is designed to be safe and non-toxic but please use common sense when working with it. Keep away and out of eyes as it is a strong eye irritant. Wash your hands well with soap and water when the job is complete. If you or your client experiences any sensitivity use a fan or open a window or wear Nitrile gloves.

Perfector, Perfector Plus and Retouch Plus Adhesives

The Perfector line adhesives are pressure sensitive medical adhesives used to bond human skin to different substrates; such as polyester, nylon, types of polyurethane and other plastics that hairpieces and other make up and special effects items contain for skin application. Perfector has been tested on human skin and found to be non-irritating and does not cause sensitization.

Note: For make up and special effects artists: Perfector can be applied on facial skin, including areas surrounding the eyes and underneath the nose.

SUMMARY QUALITIES:

Contains less than 1% of VOC (Volatile Organic Compound), which is the percentage of evaporated hazardous ingredients. By far the lowest in the field. Contains virtually no hazardous ingredients in comparison to other adhesives in the market.

Highest skin bond of its type - approx. 60 oz/sq. inch.

The adhesive is very friendly to the skin; for example, it can be used repeatedly before final removal. Not recommended on a regular basis.

High flexibility. Can be prepared and applied with a roll-on and spray device.

Very high resistance to water and perspiration.

Adheres to most known types of polyurethane, vinyl, nylon, polyester and other common plastics.

Complies with the new *ISO 9001, which is the new generations' standard.

Client preferred bonding time is up to 25 days. Due to the nature of the Perfector as a medical adhesive, bonding time can vary based on method of application. The Perfector system includes a 1oz. bottle for touch up in case of edge lifting near the end of the bonding period. It is preferable by Hair & Compounds, Inc. to supplement the desired bonding time with the additional *Retouch* adhesive, rather than risk both the technician and client's health with harmful vapors or hazardous adhesives.

Bonding time depends upon application techniques, scalp conditions, body chemistry, temperatures, humidity and physical stress. These variables will have a great impact on Perfector's performance. Although the application instructions following are vital for the adhesive to give a true performance, with practice you will be able to achieve a higher flexibility in controlling the duration suitable to your client's needs.

*AVOID suntan beds. The direct UV light may deteriorate the Perfector bond.

Perfector, Perfector Plus and Retouch Plus Adhesives

Application and Removal Instructions

Preparation

Trim all hair in area of attachment, to the outside edge of the line of demarcation, to approximately 1/16th to 1/8th of inch stubble.

Shampoo the client thoroughly with a shampoo that does not contain conditioning properties. Do not complete with conditioner, as this will deposit oily residues on the scalp.

Mark area of attachment with grease pencil.

Finish with a skin toner that is oil free and allow to completely dry.

Application

Short Term Bond (up to 1 week)

Apply the thinnest layer possible to the underside of the hairpiece base. Push brush against surface to keep the layer consistently smooth while obtaining the thinnest layer possible.

Do not apply adhesive on the scalp.

Allow to dry until clear.

Allow to air cure an additional 7 to 10 minutes after it has turned clear.

Align hairpiece base onto scalp working from front to back. You must be very precise with the attachment, as it is difficult to remove immediately after bonding.

Using fingertips, check all areas for air bubbles or gaps and press out. Be sure to smooth and press rather than stretch the hairpiece.

Average Term Bond (1 to 3 weeks)

Apply the **thinnest layer possible** to the underside of the hairpiece base. Push brush against surface to keep the layer consistently smooth while obtaining the thinnest layer possible

b. Apply the thinnest layer possible to the outlined areas of the scalp.

c. Allow to dry until clear.

d. Allow to air cure an additional 7 to 10 minutes after it has turned clear.

Align hairpiece base onto scalp working from front to back. You must be very precise with the attachment, as it is difficult to remove immediately after bonding.

Using fingertips, check all areas for air bubbles or gaps and press out. Be sure to smooth and press

Perfector, Perfector Plus and Retouch Plus Adhesives

Application and Removal Instructions, cont.

Long Term Bond (For oily skin or humid temperatures, 3-4 weeks)

Apply the **thinnest layer possible** to the outlined areas of the scalp. Push brush against surface to keep the layer consistently smooth while obtaining the thinnest layer possible.

Use a blow dryer set on cool to dry until clear. Then continue to blow dry for another 3-4 minutes after it has turned clear. Occasionally, the Perfector will seem to have disappeared into the base and will not feel tacky. If so, apply a second layer to base. In principle, it is not damaging to apply two layers on any of the bases, just time consuming.

Apply second layer to scalp and continue with steps A and B.

Apply third layer to scalp.

Apply the first layer of adhesive to the hairpiece base.

Use the blow dryer to dry both surfaces as outlined in step B.

Align hairpiece base onto scalp working from front to back. You must be very precise with the attachment, as it is difficult to remove immediately after bonding.

Using fingertips, check all areas for air bubbles or gaps and press out. Be sure to smooth and press

***Very important!! Additional layers of adhesive may only be applied after previous layer has completely dried! To speed up the drying time, use a blow dryer set on cool. Blow dry until clear and then continue for another 3-4 minutes.**

Removal

Brush a small amount of a solvent under the front edge of hairpiece, wait for two minutes and then gently peel back.

Use a clipper to cut any hair that has grown into the hairpiece.

Continue to brush small amounts of the solvent in order to break the bond and completely separate the hairpiece from the scalp.

Wipe the scalp with a cloth to remove the solvent and the adhesive residue.

Apply the solvent liberally to scalp and allow penetrating for one minute.

Using a cloth or sponge, begin to wipe off the remaining adhesive residues from the scalp until completely clean.

Apply the solvent to hairpiece base and allow penetrating for a few minutes.